

Use

Changeover control for lighting and other loads.

Range

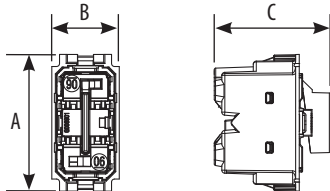
Designation	Item	Related cover
Shutter switches Changeover switch 1P	K4027	<input type="checkbox"/> KW06 - <input checked="" type="checkbox"/> KG06 <input type="checkbox"/> KM06
Changeover switch DND-0-MUR with interlock with led embedded 230V	K4027H	<input type="checkbox"/> KW06H - <input checked="" type="checkbox"/> KG06H <input type="checkbox"/> KM06H
Changeover switch DND-0-MUR with interlock with led embedded 127V	K4027V127H	<input type="checkbox"/> KW06H - <input checked="" type="checkbox"/> KG06H <input type="checkbox"/> KM06H
Replacement led to use into K4027H color RED/GREEN 230V a.c	K4743V230RG	
Replacement led to use into K4027H color RED/GREEN 127V a.c	K4743V127RG	

Colours code:

White Black Sand

Overall dimensions (mm)

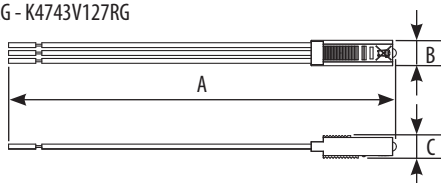
K2027



K2027H - K4027V127H



K4743V230RG - K4743V127RG



	A	B	C
K2027	45.2	22.3	38.6
K2027H - K4027V127H	45.2	22.3	38.6
K4743V230RG - K4743V127RG	128.2	8.4	7.4

Connection

Terminal type: screw clamp

Terminal capacity: 2 x 2,5 mm² max

Stripping length: 9 mm

Compatible with flexible or rigid cables

Technical characteristics

- Protection index

(considering a complete installation, including cover plate) Penetration by solid bodies/liquid: IP20 considering complete installation

- Mechanical characteristics

Impact test: IK 04

- Material characteristics

Case: PC (Polycarbonate)

Halogen free.

UV resistant.

Self-extinguishing:

850° C / 30 s for insulating parts holding live parts in place

650° C / 30 s for other parts made of insulating materials

- Electrical characteristics

Voltage: 250 V a.c.

Current: 10 A

- Climatic characteristics

Storage temperature: - 10° C to + 70° C

Use temperature: - 5° C to + 35° C

Cleaning

Clean the surface with a cloth.

Do not use acetone, tar-removing cleaning agents or trichloroethylene.

Caution: Always test before using special cleaning products.

Standards and approvals

Compliance with standards IEC/EN 60669-1.

Refer to e.catalogue.